

3. MECHANICAL CHARACTERISTICS

NO.	ITEM	SPECIFICATION	REMARK
3.1	Radial Shaft Loading	5N Max.	
3.2	Axial Shaft Loading	1N Max.	
3.3	Radial Shaft Play	0.05 mm Max.	@500G
3.4	Axial Shaft Play	0.6 mm Max.	@500G
3.5	Mass	Approximate 21g	
3.6	Rotor Inertia	Approximate 0.25gcm ²	

4. OPERATING CONDITIONS

NO.	ITEM	SPECIFICATION	REMARK
4.1	Operating Temperature	-20°C ~ +50°C	
4.2	Operating Humidity	15 ~ 85% RH	No Condensation
4.3	Storage Temperature	-30°C ~ +70°C	
4.4	Storage Humidity	15~ 85% RH	No Condensation

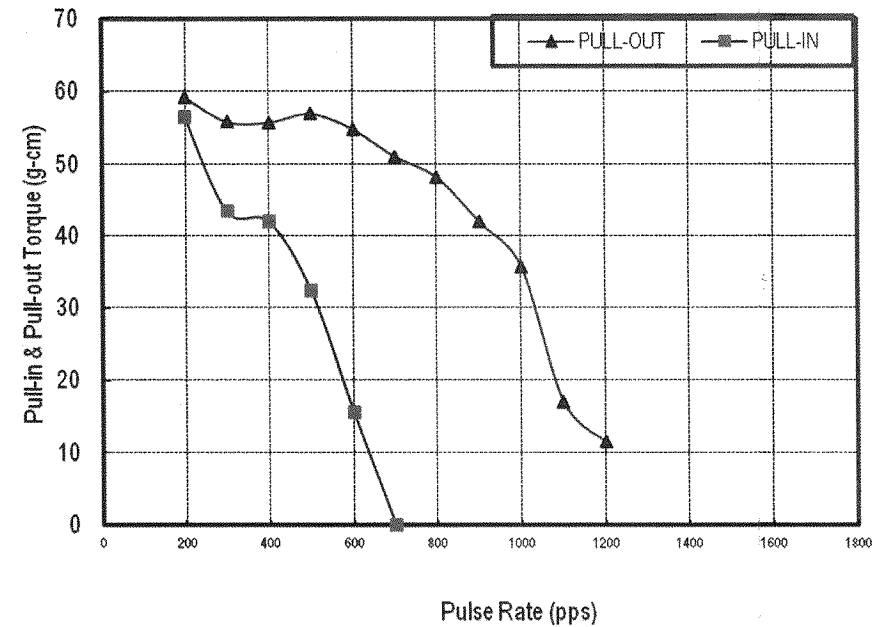
5. RELIABILITY AND WARRANTY

NO.	SPECIFICATION	REMARKS
5.1	3,000 Hours min.	<ol style="list-style-type: none"> Normal Operating Conditions Full-Step @600RPM, Rated voltage, Rated current and Rated load. No Unusual Vibration & Noise Satisfactory Electrical & Mechanical Characteristics
5.2	Satisfactory Electrical & Mechanical Characteristics	<ol style="list-style-type: none"> Vibration Test at Motor 0 ~ 100 Hz Sweep for 5 Minutes 1.5 mm, 3 Directional Amplitude for 30 Minutes
5.3	Satisfactory Electrical & Mechanical Characteristics	<ol style="list-style-type: none"> Shock Test at Package 30 G, 3 Directions each for 1 time

6. REMARKS

6.1	An abnormal operation may extremely shorten the performance or service life.
6.2	Do not hold the motor by lead wire or PCB.
6.3	The motor is subject to change for improving the performance within the range satisfying its specification.

MOONS' PM STEPPING MOTOR CHARACTERISTICS
20PM020S0-02501 (Rev. C)
 □ Constant Voltage 12V □ Rated Current 0.21 A □ Bipolar □ Full-Step □ 3540M Driver



保 密

1 2 3 4 5 6 7 8

A

B

C

D

E

F

A

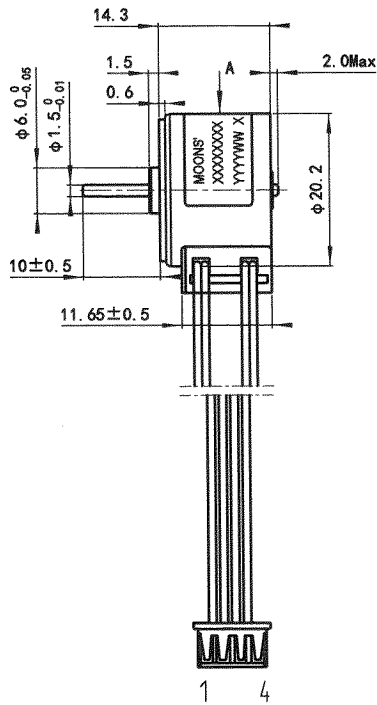
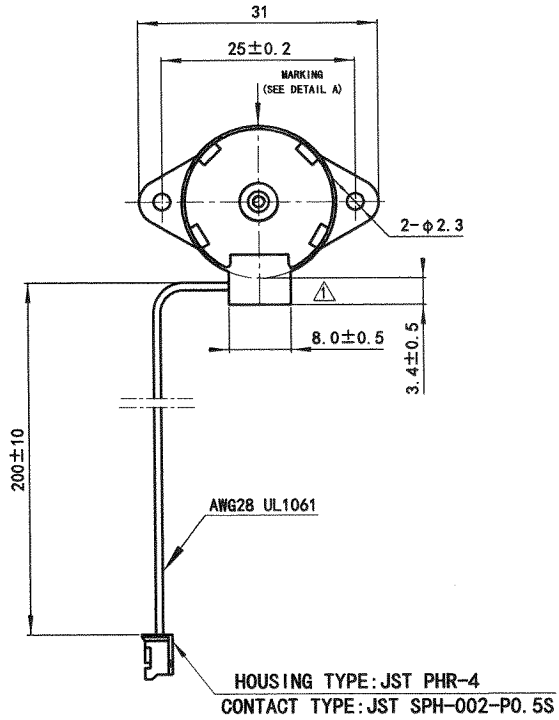
B

C

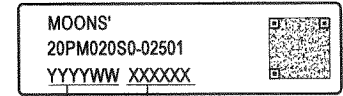
D

E

F



DETAIL A:



MOONS' 型号与第三行内容
Data Matrix ECC 200

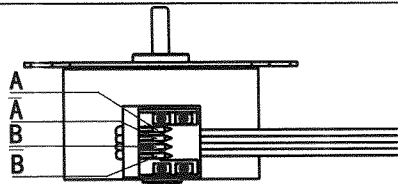
Serial No.

Year, Week

CONNECTOR PIN LOCATION

PIN NO.	COLOR	CCW ← → CW (SEEN FROM FLANGE SIDE)				PHASE
		ON			ON	
1	BLACK	ON			ON	A
2	BROWN		ON	ON		\bar{A}
3	ORANGE	ON	ON		ON	B
4	YELLOW			ON	ON	\bar{B}

保 密



电机接线图

备注 Remarks

Rev.	更改记录 Record for Changing	Date	UNLESS OTHERWISE SPECIFIED	TYPE	20PM020S0-02501
C	Electrical characteristics changed	19.04.29			
B	Cover changed	19.02.26			
A	原始版本Original revision	16.12.23			

单位 Unit: 毫米 mm 比例 Scale: 1:1

第一角画法
First angle method

未注线性与角度尺寸公差
Tolerances for linear and angular dimensions
without individual tolerance indications

GB/T 1804-m eqv ISO 2768-1:m

未注形状与位置尺寸公差
Geometrical tolerance for features without
individual tolerance indications

GB/T 1184-K eqv ISO 2768-2:K

Approve

Standard

Technology

Check

Design

5.31
1.21
5.31
5.31
韩晨 19.04.29

1

2

3

4

5

6

7

8