

## LED DRIVER SPECIFICATIONS

Customer's Part Number: \_\_\_\_\_

MOONS' Part Number: **4696350001865**

Model: **PU012H070AQ**

P/N: \_\_\_\_\_

### CUSTOMER'S APPROVAL STAMP

Please sign back after your approval. The specifications will come into force when we receive purchase order.

DWG	CHK	STANDARD	APPD



### ■ Features

- Input voltage: 90-305VAC
- Built-in active PFC function: 0.99 Typ.
- Low THCECO16-0804DT
- High efficiency: 81% Typ.
- IP66 design for indoor installation
- High surge immunity
- Compliance to worldwide safety regulations for lighting
- Suitable for dry/damp locations

更新铭牌



Class 2

### ■ Specification

#### PU012H070AQ

		PU012H070AQ	
Input	Efficiency(120Vac) <sup>Note.1</sup>	80%(Typ.)	
	Efficiency(230Vac) <sup>Note.1</sup>	81%(Typ.)	
	Voltage Range (V) <sup>Note.2</sup>	90 ~ 305Vac,	
	Voltage Rated (V) <sup>Note.2</sup>	100-277Vac	
	Frequency Range (Hz)	47~63	
	Power Factor		0.99 (Typ.)with 80%-100% load,at 120Vac
			0.96(Typ.) with 80%~100% load,at 230Vac
			>0.9 with100% load, at 100~277Vac
THD	<20%,at 100/230/277Vac input, with 80%~100% load conditions		
AC Current(Max)	0.2A at 100VAC input, 0.08A at 230VAC		
Inrush Current(Max.)	15A at 230Vac input 25°C Cold Start ( time wide=500uS, measured at 50% Ipeak,Not applicable for the inrush current to Noise Filter for less than 0.2ms)		
Leakage Current(Max.)	0.75mA at 277Vac/60Hz		
Output	Output Voltage range (V)	25	
	Rated Current(mA)	700	
	Rated Power (W)	11.9	
	Ripple Current	<30%((PK-AV) /AV) full load)	
	Current Tolerance	7%	
	Line Regulation	6%	
	Load Regulation	6%	
	Current ADJ. Range	-	
Turn on delay Time	<3.s, at 120Vac; <1.5s, at 230Vac (When the light begins to shine)		
Protection	Over Voltage(V)	<25 Protection type: Voltage limiting.output will not exceed the upper limit voltage , recovers automatically after fault condition is removed.	
	Short Circuit	Protection type: Hiccup mode. recovers automatically after short is removed.	
	Over temperature	Protection type: Resumable mode.when the inside temperature of PSU rise to 110°C(Typ.), the PSU will shut down or output current will reduce to almost no;The power supply should resume its normal operation when the inside temperature of PSU drop to normal temperature.	
Environment	Operating Temp.	-40~+70°C( Refer to 'Derating Curve' )	
	Tc	90°C max	
	Operating Humidity	20~95% RH non-condensing	
	Storage Temp., Humidity	-40~+85°C , 10-95%RH	
	Temp. Coefficient	0.03%/°C ( 0~50°C )	
	Vibration	10-500Hz,5G 12min/cycle , period for 72min each along X、 Y、 Z axes	
Safety & EMC	Safety Standard	UL8750, UL1310 Class 2,CSA C22.2 NO.223-M91,EN61347-1,EN61347-2-13	
	Withstand Voltage	I/P-O/P:3.75KVac,	
	Isolation Resistance	I/P-O/P:100M Ohms/500Vdc/25°C/70%RH	
	EMC Emission	EN55015/FCC Part 15 Class B, EN61000-3-2 Class C, EN61000-3-3	
	EMC Immunity	EN61000-4-2,3,4,5,6,8,11, EN61547 ( Surge: L-N 2KV)	
Others	MTBF	300,000 Hours,measured at full load,25°C ambient temperature	
	Lifetime	50,000 Hours at Tc 75°C(Refer to"Life Time VS. Tcase (Ref.)")	
	Dimension	85 x 36 x 23 mm ( LxWxH )	
	Weight(Typ.)	100g	

Note.1: Measured at full load and steady-state temperature in 25°C ambient(Efficiency will be about 2% lower if measured immediately after startup ); Note. 2: Derating may be needed under low input voltages , Please Refer to 'Derating Curve'; Note. 3: All parameters NOT specially mentioned are measured at 230VAC input , rated load and 25°C ambient temperature ;

subject to change without notice

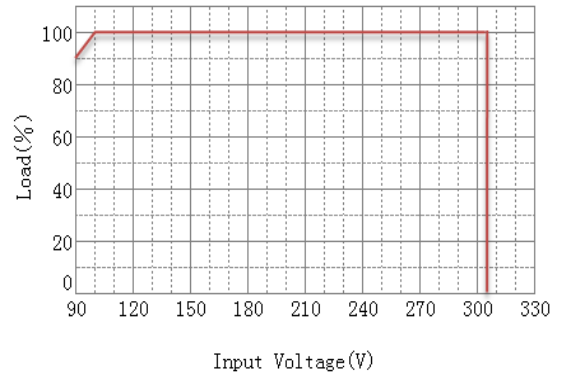
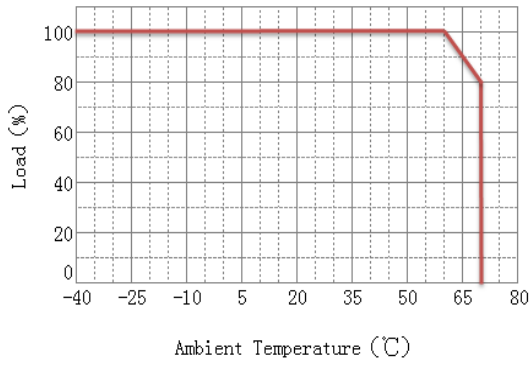
Page 3 of 5

SHANGHAI MOONS' AUTOMATION CONTROL CO., LTD.

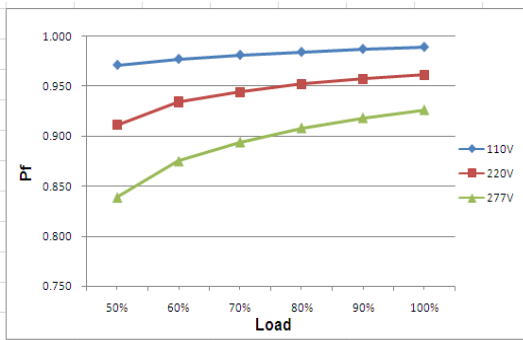
Add: No.168, Mingjia Road, Shanghai 201107, P.R.China

Tel: +86 (0)21 52634688 Website: www.moons.com.cn

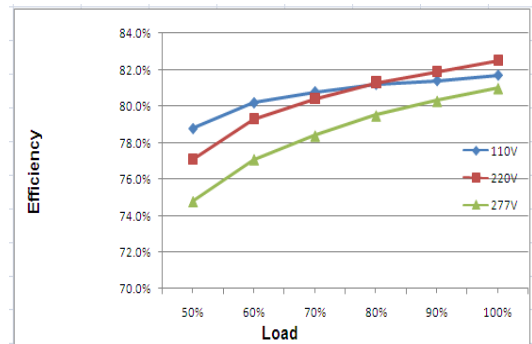
**Derating Curve**



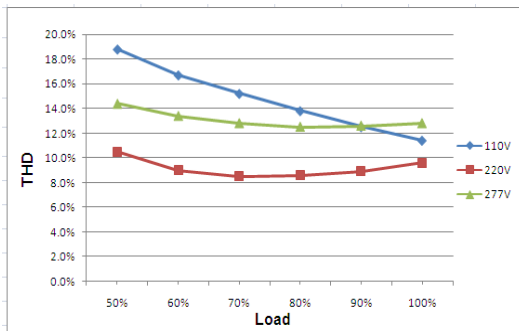
**Power Factor VS. Load Curve**



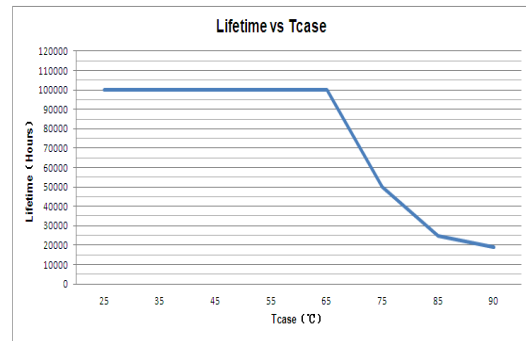
**Efficiency VS. Load Curve(Ref.)**



**THD Curve(Ref.)**

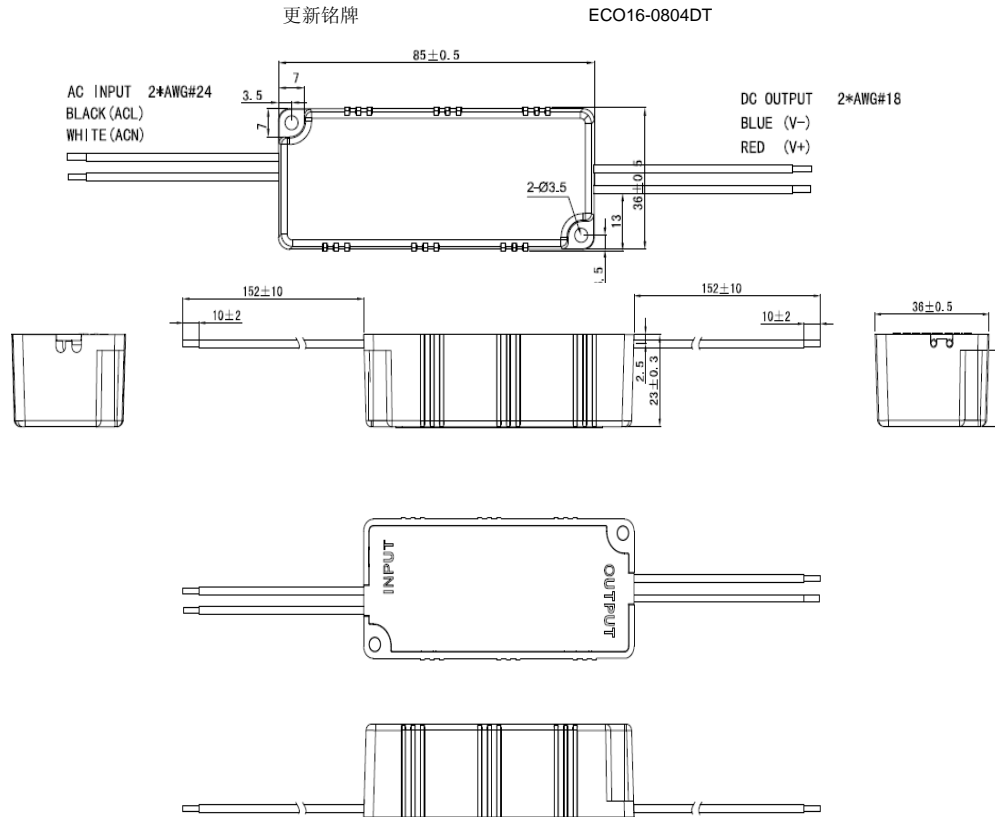


**Life Time VS. Tcase (Ref.)**

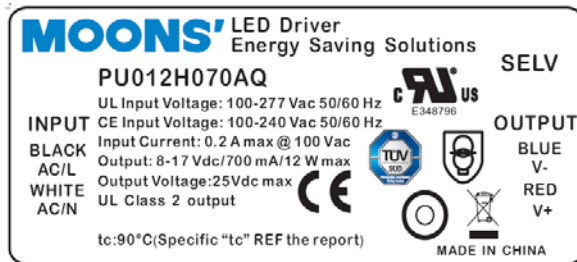


■ Mechanical Specification

Dimensions (Unit: mm)



■ Nameplate



RoHS Compliance:

Our products comply with the European Directive 2002/95/EC, calling for the elimination of lead and other hazardous substances from electronic products.