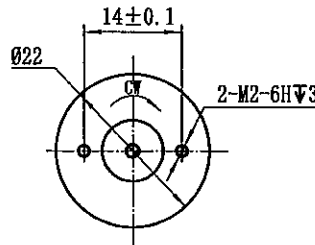
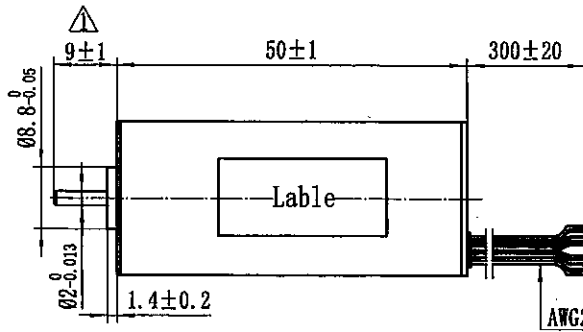


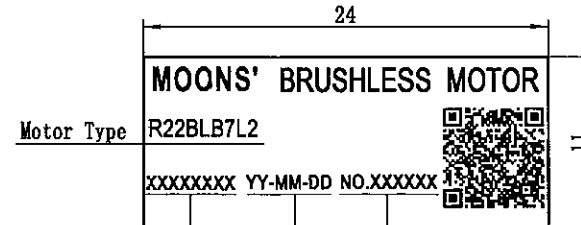
4611130001023

电气连接
Electric Connection

编号 NO.	线色 COLOR	定义 FUNCTION
1	橙/orange	U
2	绿/green	V
3	棕/brown	W
4	黄/yellow	Hu
5	白/white	Hv
6	蓝/blue	Hw
7	红/red	VCC(+5V)
8	黑/black	GND



电机铭牌 Label Detail



加工单号 Date 序号

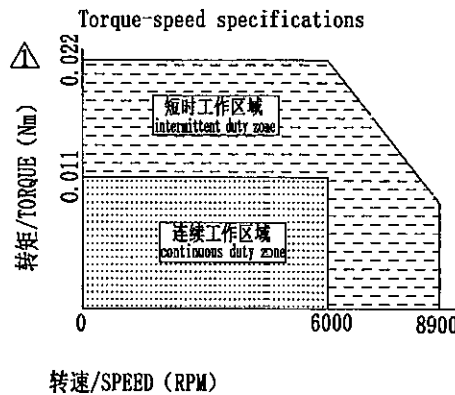
备注：二维码内容包含机种名、生产日期和序列号。

保 密

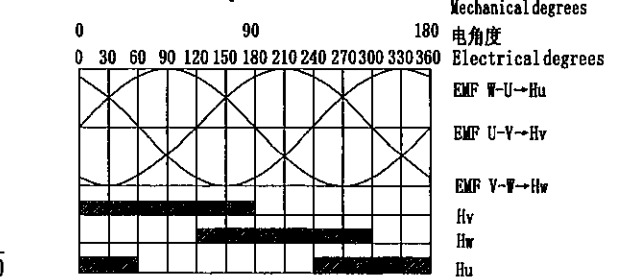
规格
Specifications

1	额定电压/Rated power supply	24	VDC
2	额定输出功率/Rated output power	7	W
3	极数/poles number	4	
4	相数/Phase number	3	
5	额定转速/Rated rotational speed	6000	RPM
6	最大转速/Maximum speed	8900	RPM
7	额定转矩/Rated torque	0.011	Nm
8	额定电流/Rated winding current	0.54	A
9	线反电势系数/Voltage constant±10%	2.01	Vrms/krpm
10	惯量/Moment of inertia	1.02×10 ⁻⁵	kgm ²
11	线电阻Ph/ph resistance±10% at 20℃	13	Ω
12	线电感Ph/ph inductance±30% at 1KHz 20℃	3.4	mH
13	电机质量/Motor mass	0.08	kg
14	绝缘等级/Insulation class	B	130℃
15	防护等级/Protective enclosure rating	IP40	

转矩-转速特性



线反电势与霍尔相位关系图 (顺时针)
Relation between phase EMF's and hall sensor outputs at CW



D	2.47Vrms/krpm; 13.9Ω; 3.79mH; 0.07kg	2020-07-14
C	机械角度0/45/90	2019-12-18
B	更换铭牌; 3.5Vrms/krpm; 最大转矩0.3等	2019-10-08
A	原始版本 Original revision	2018-05-25
REV.	版本记录 REVISION RECORD	DATE

Units: mm
第一角画法
FIRST ANGLE METHOD
未注线性与角度尺寸公差
Tolerances for linear and angular dimensions without individual tolerance indications
GB/T 1804-m eqv ISO 2768-1:M
未注形状与位置尺寸公差
Geometrical tolerance for features without individual tolerance indications
GB/T 1184-K eqv ISO 2768-2:K

批准 Approve	杨月林	7.16
标准化 Standard	朱红彬	7.15
工艺 Technology	李泽炜	7.16
审核 Check	李泽炜	7.15
设计 Design	李泽炜	2020-07-14
NAMES	SIGNATURE	DATE

MOONS' BRUSHLESS DC MOTOR
Shanghai Moons' Electric Co., Ltd.

This document is released for information only. Its reproduction in whole or in part or its dissemination to third parties is prohibited. All trademarks and registered trademarks appearing on this document are the property of their respective owners.

Type: R22BLB7L2 Rev:D SCALE 1:2 Sheet 1 of 1