

# TXM

## TXM34P Quick Setup Guide

**MOONS'**  
*moving in better ways*

### Requirements:

You will need these items to setup the TXM34P:

- A 24-70VDC power supply
- A 12-48VDC auxiliary power supply (if needed)
- A PC running Microsoft Windows XP, or Windows 7/8/10 with an RS-232 serial communication port, otherwise a USB to RS-232 serial port converter is needed.
- Software: Step-Servo Quick Tuner
- A power cable, I/O cable, and communication cable. These 3 cables are NOT included and must be purchased separately. For more detailed information, refer to the TXM34P Hardware Manual, available at [www.moons.com.cn](http://www.moons.com.cn).

### Safety Instructions:



- Only qualified personnel should assemble, install, operate or maintain this equipment.
- Read all available documentation before assembly and operation.
- It is vital to ensure that all system components are connected to earth ground.
- This product contains electrostatically sensitive components that can be damaged by incorrect handling.

## Step 1

### Install Software

- a) Download the "Step-Servo Quick Tuner" from MOONS' website.
- b) Install the "Step-Servo Quick Tuner" software application.
- c) Connect the motor to the PC using the programming cable. (See "Communication Wiring" below)
- d) Choose the correct COM port. (See "Choosing the Right COM Port" below)
- e) Run the software application.



## Step 2

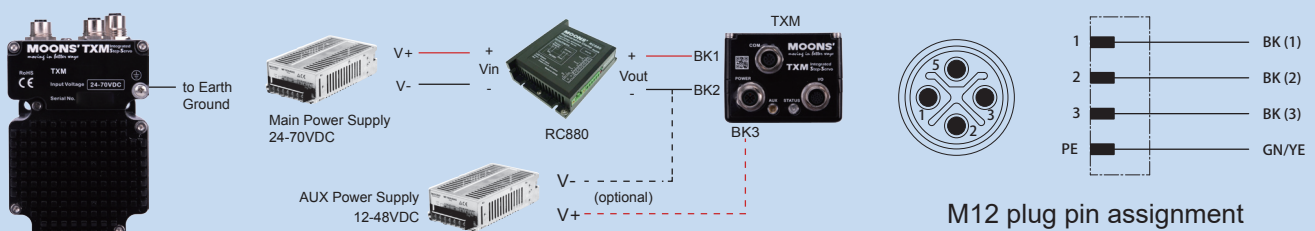
### Connect the Power Supply

Use power supply mating cable: Part number 1408835 from Phoenix Contact.

- a) Connect the main power supply "+" terminal to the mating cable "BK1" terminal & the power supply "-" terminal to the mating cable "BK2" terminal.
- b) Optional - If the Keep Alive function will be used, connect the auxiliary power supply "+" terminal to the mating cable "BK3" terminal & the power supply "-" terminal to the mating cable "BK2" terminal.

**Be careful not to reverse the wires. Reversing the connection may open the internal fuse and void the warranty**

If a regulated power supply is being used, there may be a problem with regeneration that can be solved with the use of a MOONS' RC880 Regeneration Clamp. See MOONS' website or the TXM34P Hardware Manual for more information.

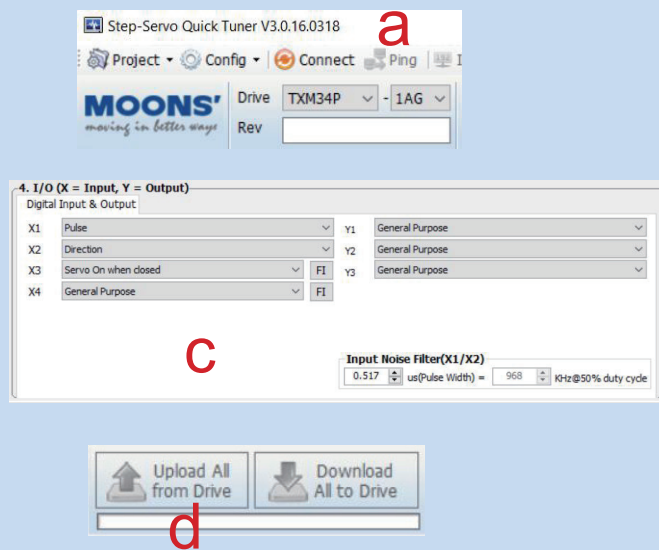
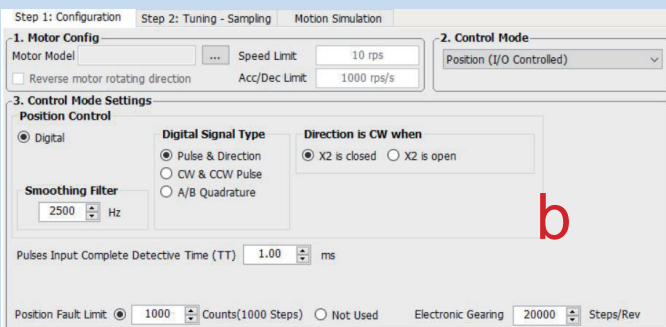


**NOTE: For best performance, when using the optional auxiliary power supply, the main power must be applied prior to the auxiliary power.**

## Step 3

### Configure the drive

- Apply power to the drive. The software will recognize the drive & display the model & firmware version.
- Setup drive control mode, and control mode settings
- Setup I/O function
- Download to the drive

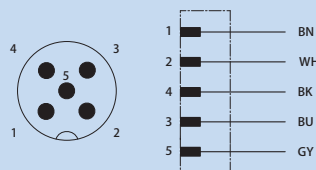


## Communication Wiring

### RS-232 Communication

The RS-232 communication cable is not included with the TXM34P. It should be made following the diagram to the right. Communication mating cable: Part number 1407805 from Phoenix Contact.

NOTE: If your PC hardware without an RS-232 port, you will need a USB to serial port converter. Please check MOONS' website for purchase information.



RS-232 Communication Cable		
Color	Assignment	PIN
BN	RX	1
WH	N/C	2
BU	TX	3
BK	GND	4
GY	N/C	5

M12 male connector pin assignment

**Do not try to plug in or remove the communication cable when motor power is ON.**

## Choosing the Right COM Port

Open the "Device Manager" on the PC. If the PC has an built-in RS-232 serial port, "Ports (COM & LPT)" will be displayed. Connect the PC and motor with the included RS-232 communication cable. Choose the connected COM(n) port in the Step-Servo Quick Tuner software.

If the PC does not have an RS-232 serial port, a USB to RS-232 serial port adapter will be needed. Open the "Device Manager" on the PC. There may or may not be a "Ports" selection. Connect the adapter to the PC, this USB adapter COM port should then be displayed. Choose this new COM(n) port in the Step-Servo Quick Tuner software.

See Section 3.2.2 "Choosing the Right COM Port in the Hardware Manual for more information.

If you have any questions or comments, please call MOONS' Customer Support at +86-4008209661, or visit us online at [www.moonsindustries.com](http://www.moonsindustries.com)