

TXM

TXM34Q/C Quick Setup Guide

MOONS'
moving in better ways

Requirements:

You will need these items to setup the TXM34Q/C:

- A 24-70VDC power supply
- A 12-48VDC auxiliary power supply (if needed)
- A PC running Microsoft Windows XP, or Windows 7/8/10 with an RS-232 serial communication port, otherwise a USB to RS-232 serial port converter is needed. For CANopen drives, CANopen communication tool is required. For RS-485 drives, a USB to RS-485 converter is needed. For Ethernet drives refer to Section 3.2.5 "Connecting to a PC using Ethernet" in the hardware manual for information on configuring the Ethernet on the PC and motor
- Software: Step-Servo Quick Tuner
- A power cable, I/O cable, and communication cable.

Safety Instructions:



- Only qualified personnel should assemble, install, operate or maintain this equipment.
- Read all available documentation before assembly and operation.
- It is vital to ensure that all system components are connected to earth ground.
- This product contains electrostatically sensitive components that can be damaged by incorrect handling.

These 3 cables are NOT included and must be purchased separately. For more detailed information, refer to the TXM34Q/C Hardware Manual, available at www.moonsindustries.com

Step 1

Install Software

- a) Download the "Step-Servo Quick Tuner" from MOONS' website.
- b) Install the "Step-Servo Quick Tuner" software application.
- c) Connect the motor to the PC using the programming cable.
(See "Communication Wiring" below)
- d) Choose the correct COM port.
(See "Choosing the Right COM Port" below)
- e) Run the software application.



Step 2

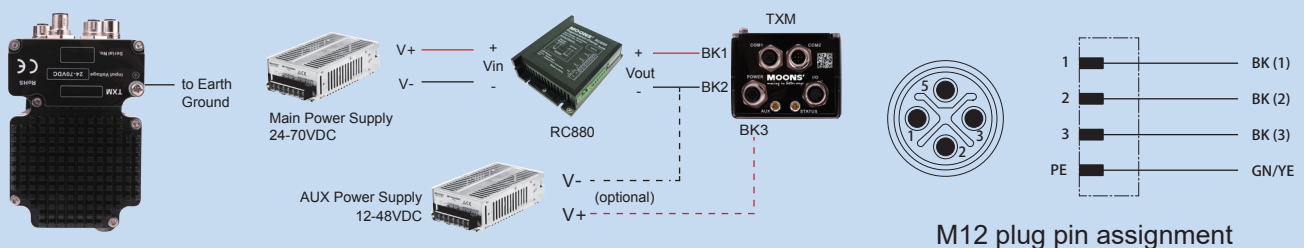
Connect the Power Supply

Use power supply mating cable: Part number 1408835 from Phoenix Contact.

- a) Connect the main power supply "+" terminal to the mating cable "BK1" terminal & the power supply "-" terminal to the mating cable "BK2" terminal.
- b) Optional - If the Keep Alive function will be used, connect the auxiliary power supply "+" terminal to the mating cable "BK3" terminal & the power supply "-" terminal to the mating cable "BK2" terminal.

Be careful not to reverse the wires. Reversing the connection may open the internal fuse and void the warranty

If a regulated power supply is being used, there may be a problem with regeneration that can be solved with the use of a MOONS' RC880 Regeneration Clamp. See MOONS' website or the TXM34Q/C Hardware Manual for more information.

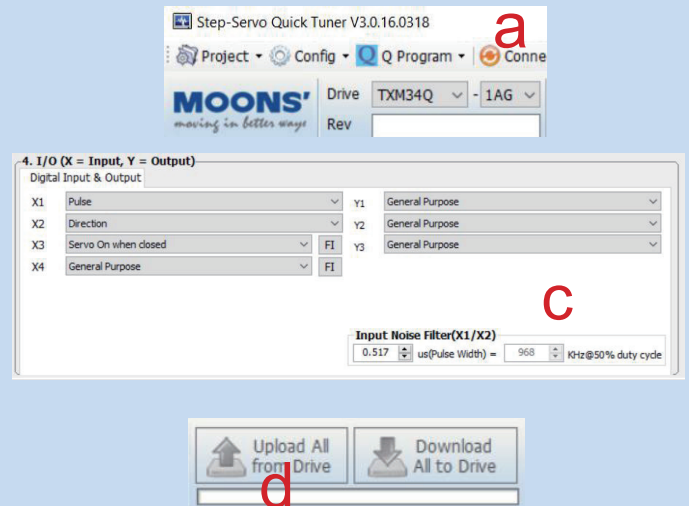
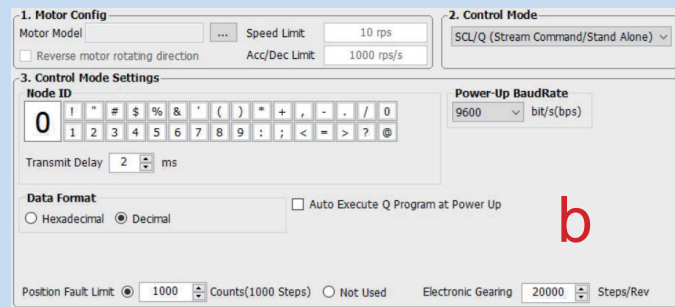


NOTE: For best performance, when using the optional auxiliary power supply, the main power must be applied prior to the auxiliary power.

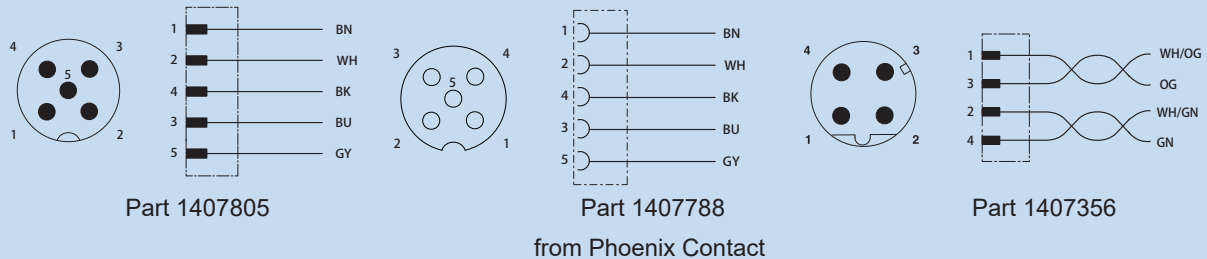
Step 3

Configure the drive

- Apply power to the drive. The software will recognize the drive & display the model & firmware version.
- Setup drive control mode, and control mode settings
- Setup I/O function
- Download to the drive



Communication Wiring



RS-232 Communication

Use part number 1407805 and connect as follows:

Color	Assignment	PIN
Brown	RX	1
White	N/C	2
Blue	TX	3
Black	GND	4
Gray	N/C	5

CANopen Communication

Only COM1 with RS-232 serial port
CANopen connection is as follows:

COM1	Part no. 1407805	COM2	Part no. 1407788
Brown	RS-232_TXD 1	Brown	N/C 1
White	RS-232_RXD 2	White	N/C 2
Blue	GND 3	Blue	GND 3
Black	CAN_H 4	Black	CAN_H 4
Gray	CAN_L 5	Gray	CAN_L 5

RS-485 Communication

RS-485 connection is as follows:

COM1	Part no. 1407805	COM2	Part no.1407788
Brown	RX+ 1	Brown	RX+ 1
White	RX- 2	White	RX- 2
Blue	TX+ 3	Blue	TX+ 3
Black	TX- 4	Black	TX- 4
Gray	GND 5	Gray	GND 5

Ethernet Communication

COM1 and COM2 are same connectors
Use part number 1407356 and connect as follows:

Color	Assignment	PIN
Yellow	TX+	1
White	RX+	2
Orange	TX-	3
Blue	RX-	4

Choosing the Right COM Port

Open the "Device Manager" on the PC. If the PC has an built-in RS-232 serial port, "Ports (COM & LPT)" will be displayed. Connect the PC and motor with the included RS-232 communication cable. Choose the connected COM(n) port in the Step-Servo Quick Tuner software.

See Section 3.2.4 "Choosing the Right COM Port in the Hardware Manual for more information.

If the PC does not have an RS-232 serial port, a USB to RS-232 serial port adapter will be needed. Open the "Device Manager" on the PC. There may or may not be a "Ports" selection. Connect the adapter to the PC, this USB adapter COM port should then be displayed. Choose this new COM(n) port in the Step-Servo Quick Tuner software.

If you have any questions or comments, please call our Customer Support at +86-4008209661, or visit us online at www.moonsindustries.com