



Product Specification

Supplier Authorized Signature/供方承认签核				
Status: []	Product name/ 品名	Touch Setting Tool		
	Model/ 型号	MSSL300		
Draft/ 草稿	Project/ 项目号	A6588		
	Version/ 版本	A0		
Released/ 发布	Prepared/ 编制		Date/日期	
	Marketing/ 市场部		Date/日期	
	Quality/ 质量部		Date/日期	
	Approved/ 批准		Date/日期	

Customer Authorized Signature/客户承认签核			
Quality/质量		Approved/批准	

History Version/历史版本

Version 版本	Prepared 编制	EC No. EC 编号	Start Date /起始日期	Notes 备注
A0	顾佳斌		2017-03-20	First released

1 DESCRIPTIONS

The Touch Setting Tool (MSSL300) is design for configuring MOONS' LED Drivers.

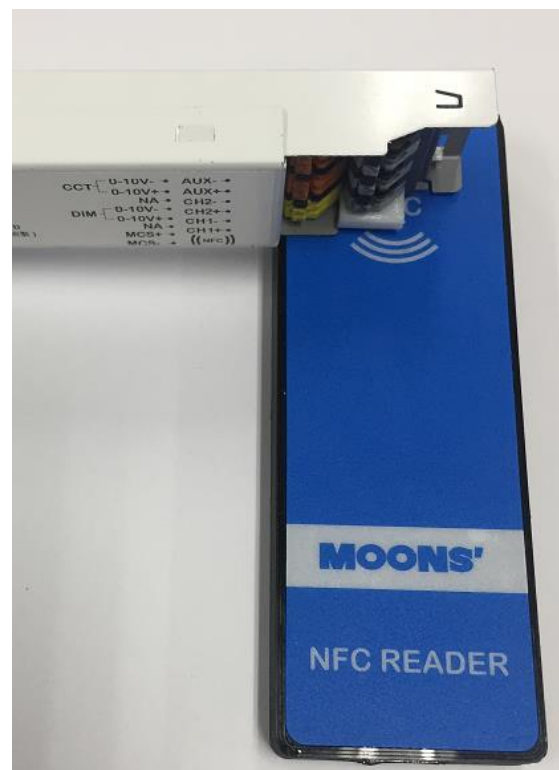
Easy to use, only two steps to complete setting LED drivers' configuration.

1. Click the WRITE button on the user's graphical interface.
2. Take the NFC reader near to the LED driver's antenna area.

During programming process, the driver needn't to be charged. Moreover there's no cable wiring between driver and Touch Setting Tool.

1.1 FEATURES

- USB Bus power supply;
- Support USB2.0 ;
- System requirements:
Windows[®] PC (XP/7/8/10)
- Operating modes: Reader/Writer;
- RF communication at 13.56MHz;
- Support ISO/IEC15693;
- Support ISO/IEC 14443
Type A & B;
- Configuration function, can be used
for a variety of LED drivers;
- Size: 138.5*50.0*14.2mm;
- For desktop and handheld use.



2 CHARACTERISTICS

2.1 ABSOLUTE MAXIMUM RATINGS

PARAMETER	TEST CONDITIONS	MIN	TYP	MAX	UNIT
Min input voltage	20°C	4.5	/	/	VDC
Max input voltage	20°C	/	/	6.0	VDC

2.2 ELECTRICAL & RF CHARACTERISTICS

At 5VDC input, 20 °C, 50% RH, 100Kpa conditions.

PARAMETER	TEST CONDITIONS	MIN	TYP	MAX	UNIT
DC input voltage	USB bus power	4.8	/	5.2	Vdc
DC input current	USB bus power	20	/	130	mA
Frequency of operating field (carrier frequency)		13.553	13.56	13.567	MHz
USB transmission voltage	DP to DM	-0.5	/	3.63	V
USB transmission rate	USB I/O	/	1	/	Mbps

2.3 OPERATING CONDITIONS

PARAMETER	TEST CONDITIONS	MIN	TYP	MAX	UNIT
Operating temperature		-25	/	55	°C
Storage temperature	Indoor dry, well-ventilated place	-40	/	85	°C
Relative humidity	No frost	10	/	90	%
Vibration		/	/	1	G
Ingress protection		/	IP40	/	
Packaging Impact	Drop	/	1	/	M
BTBF	USB bus power	100k	/	/	H

2.4 SOCKET LIFE EXPECTANCY

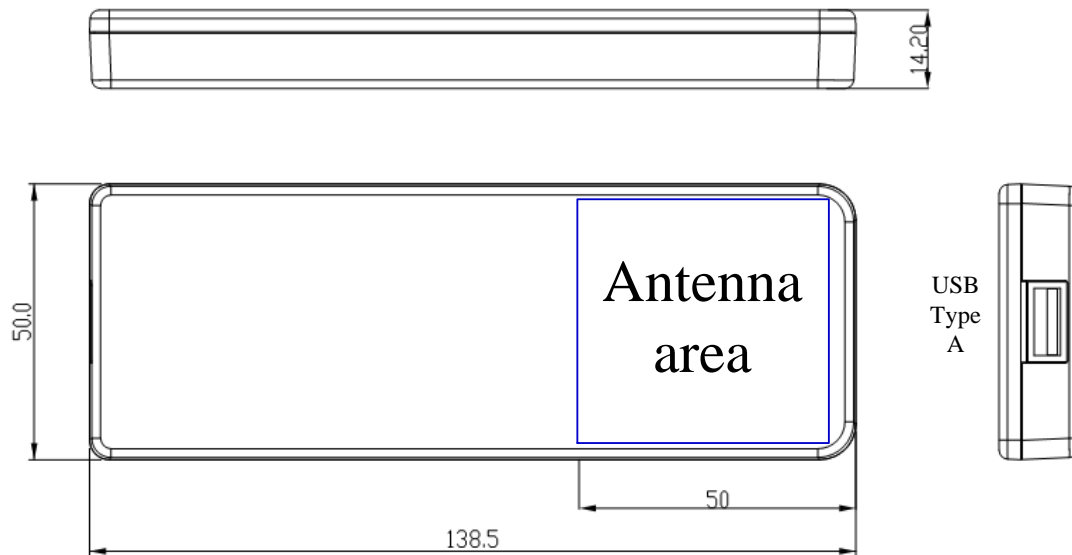
ITEM	MANUFACTURER	INSERTIONS
USB type A	OUPIN	5,000

2.5 EMC

TYPE	Standard	Test level
Electrostatic discharge immunity	IEC61000-4-2	Level 3

3 MECHANICAL DATA

3.1 DIMENSIONS

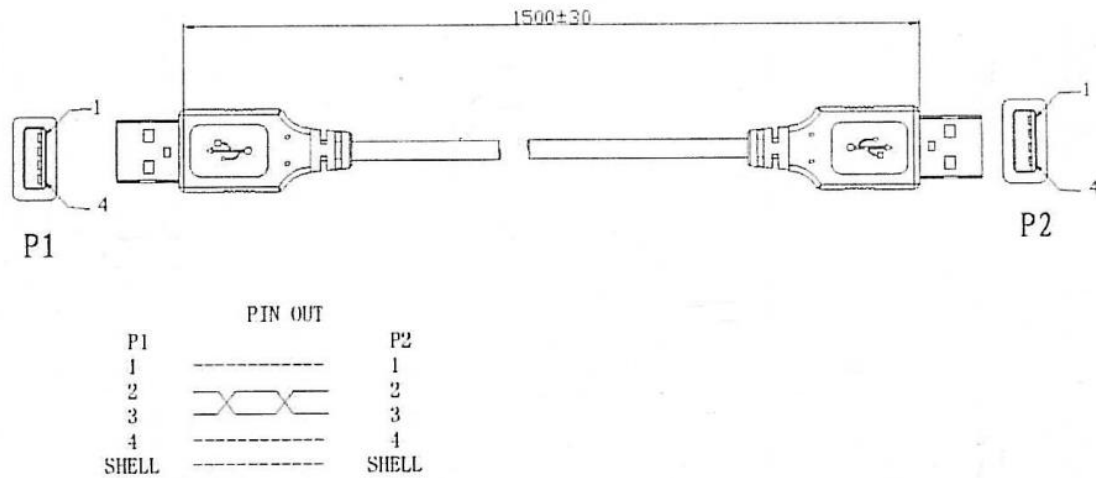


Weight: 60g;

3.2 INTERFACES

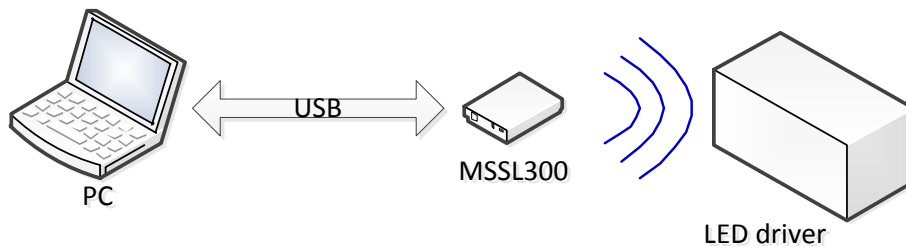
- USB type A
Connect to PC.
- NFC antenna
Communicate with LED drivers.

3.3 Cable

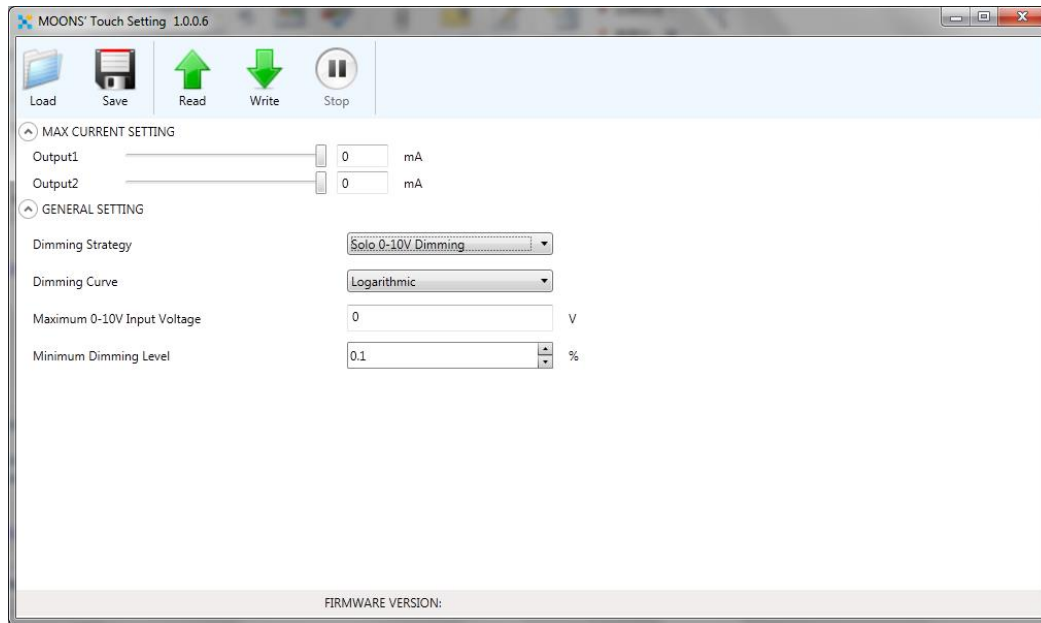


USB CABLE

4 Quick start



1. Download and install the MOONS' Touch Setting software.
The setup file is available in dedicated webpages on http://leddriver.moons.com.cn/SouProduct/UCenter/M_Search/Software_view.aspx?MATNR=Touch%20Setting&rnd=6670.
2. Connect the MSSL300 to a PC with USB cable.
3. Open the [TouchSetting.exe].
4. Click the read or write button and place the MSSL300's antenna close to the LED driver's antenna area.
5. Then wait for reading or writing finished.



5 ORDERING

DESCRIPTION	ORDERING CODE
MSSL300 *1;	4696350003551
USB cable *1	4529101000018